

IMPIEGO

Spartitraffico. Bordo laterale

CAMPO DI RESISTENZA

Ru compresa tra 200-600 KN

CLASSE

B

MATERIALI

CALCESTRUZZO

RcK \geq 450 daN/cm²

ARMATURA

Acciaio Fe B44K

GIUNTI

Barre FeB32K

COMPORTAMENTO PROBABILE

	AUTOVETTURE	AUTOCARRI LEGGERI	AUTOCARRI PESANTI
RESISTENZA ALL'URTO	Ottima	—	Buona
DISSIPAZIONE DI ENERGIA	Effetto N.J.	—	Ottima
POSSIBILITÀ DI RIDIREZIONE	Ottima	—	Ottima
PROBABILITÀ DI SCAVALCAMENTO	Nessuna	—	Scarsa
INGOMBRO/DEFORMABILITÀ	Bassa	—	Notevole
MANUTENIBILITÀ	Ottima	—	Ottima

OMOLOGAZIONE

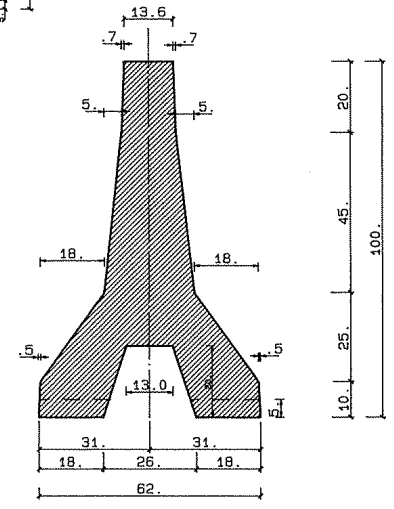
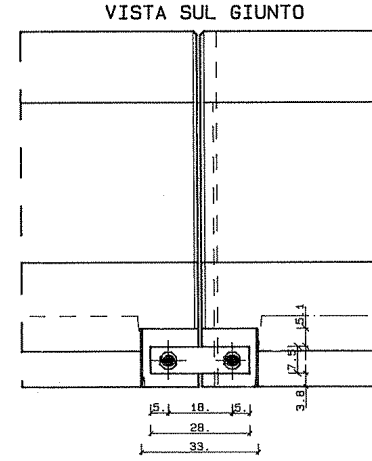
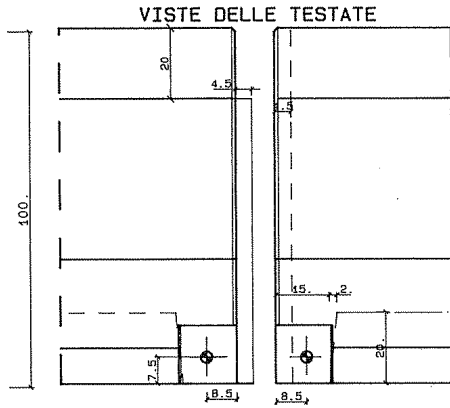
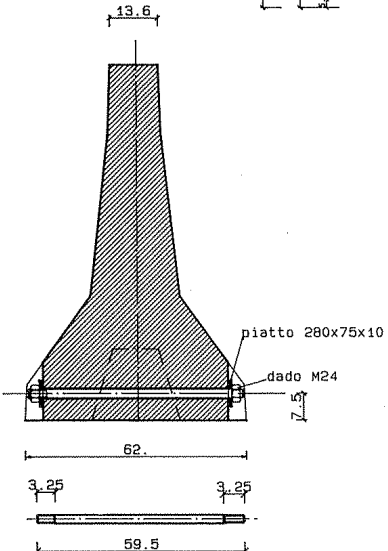
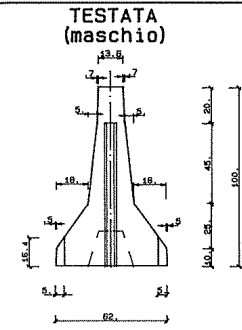
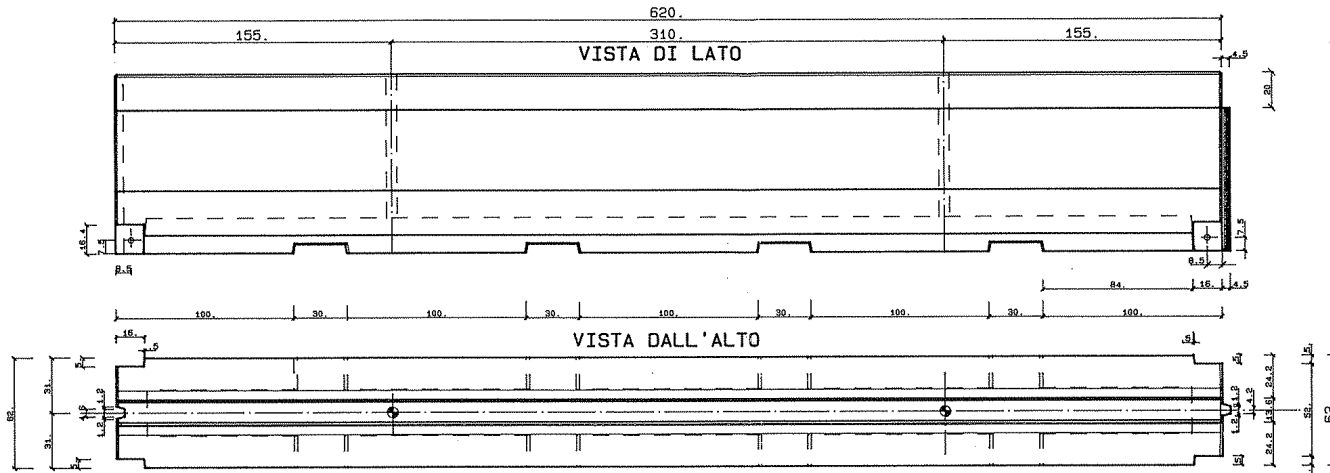
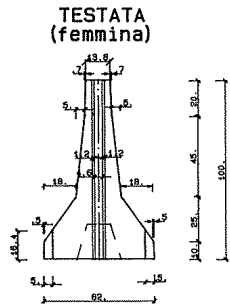
Su Autostrade sistemazione provvisoria durante i lavori per spartitraffico o bordo laterale e come prima fase di realizzazione spartitraffico bifilare con terra interposta. Impieghi permanenti su strade a scarso traffico merci.

CERTIFICAZIONE

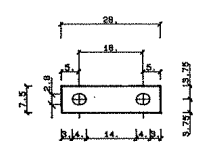
Basata sul complesso di prove eseguite sulla pista di Anagni nel periodo gennaio 1987 - aprile 1988 e depositata globalmente presso il Ministero LL.PP. Consiglio Superiore V Sezione.

DATA INSERIMENTO IN CATALOGO

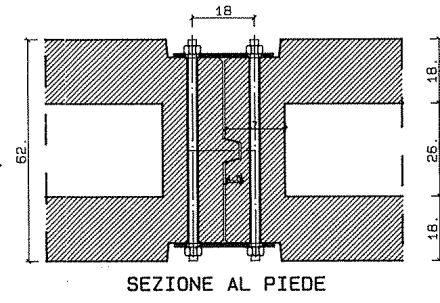
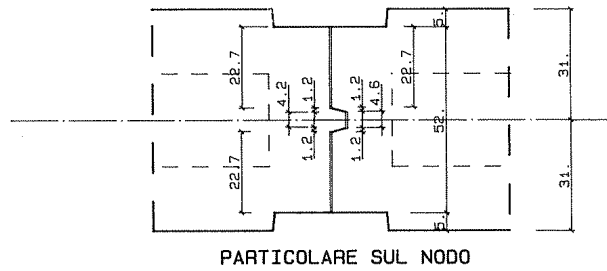
05.05.1988

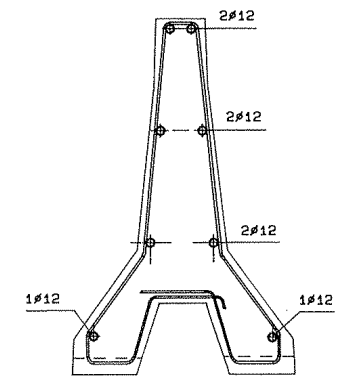
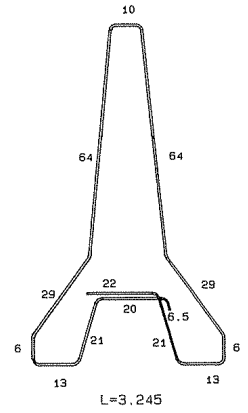
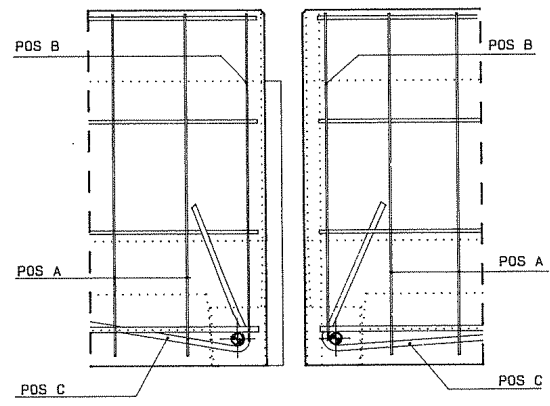
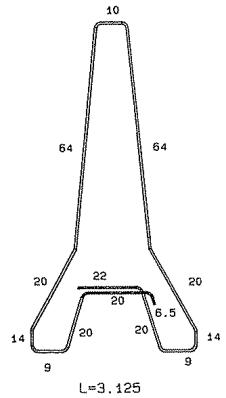
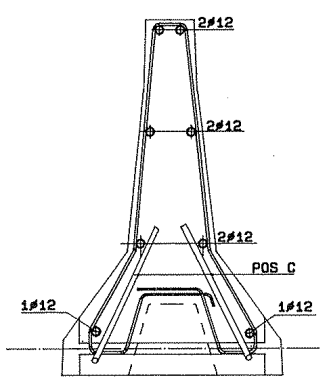
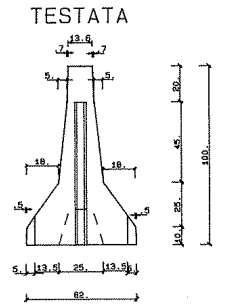
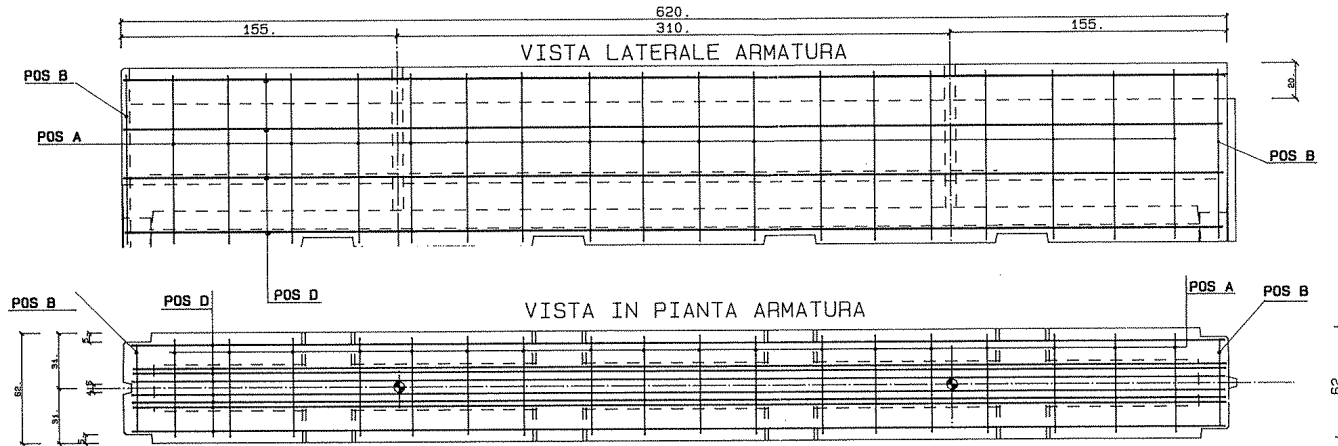
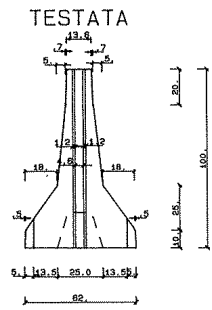


PARTICOLARE BARRA
(estremita' filettate M24)



PARTICOLARE PIATTO DI UNIONE ELEMENTI 280x75x10





ARMATURA ALL'ESTREMITA'

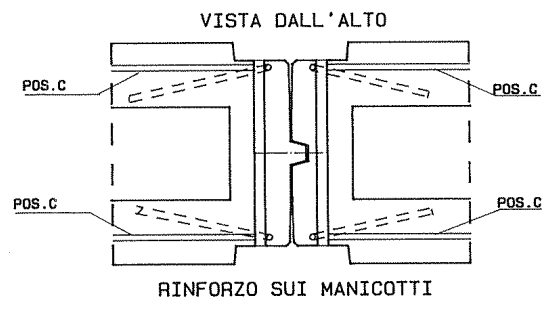
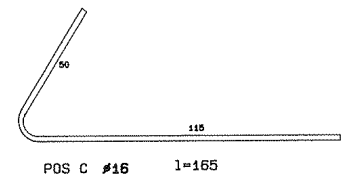
STAFFA POS B

VISTA LATERALE ARMATURA ALL'ESTREMITA'

STAFFA TIPO A

ARMATURA IN MEZZERIA

POS.	N.	L.unit.	L.tot.	∅	Tot.kg.
A	18	3.06	55.08	6	12.23
B	2	2.94	5.88	6	1.31
C	4	1.65	6.60	16	10.41
D	8	6.10	48.80	12	43.33
					68.73



RINFORZO SUI MANICOTTI